







ità

s,

alba L.,

domestica,

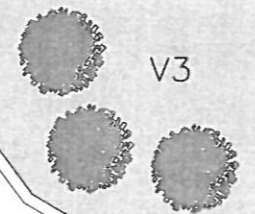
522

confine di proprietà e recinzione esistente

confine di proprietà

stradello
recinzione esistente

accesso
pedonale



V3

accesso
carrata
parcheggio P1
21.48 mq

accesso
pedonale

accesso
carrata
parcheggio P1
26.92 mq

accesso
carrata
parcheggio P1
18.14 mq

accesso
pedonale

confine di proprietà e recinzione esistente

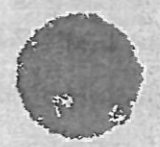
fabbricato
progetto n

n. 25 arbusti

V2



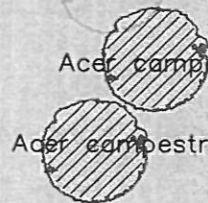
Carpinus Betulus



V1

Acer campestre

Acer campestre



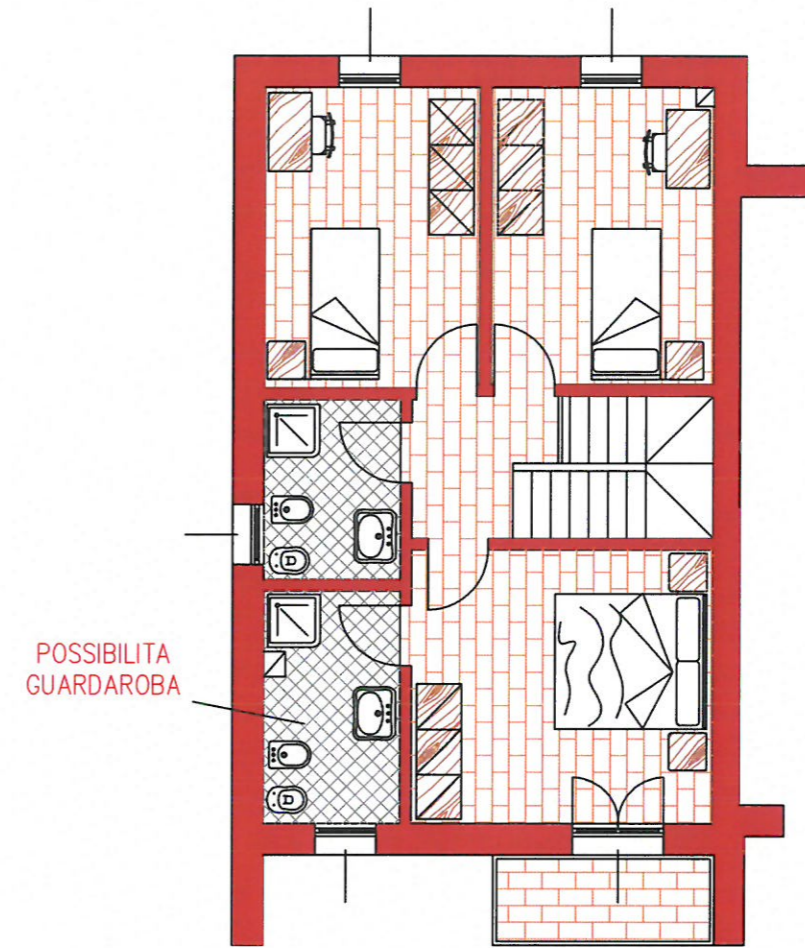
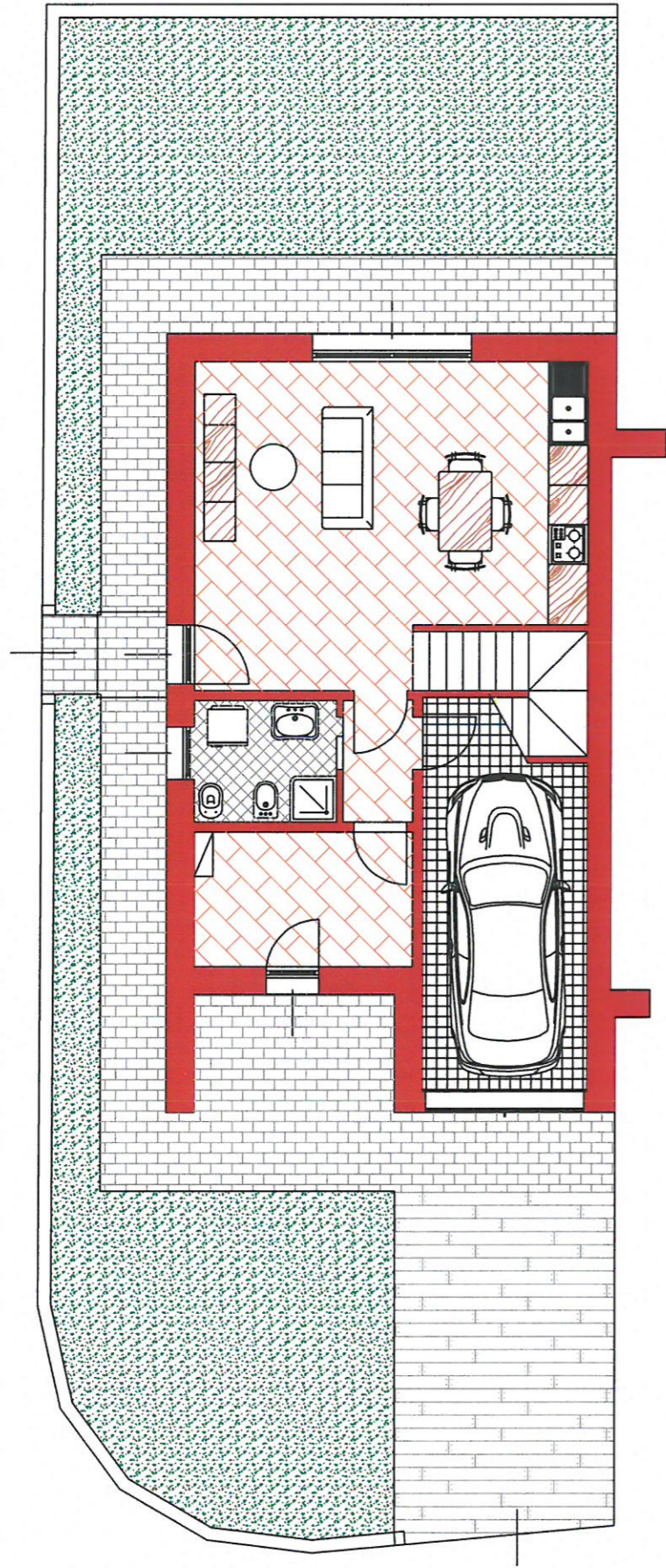
confine di proprietà e recinzione esistente

n. 20 arbusti

530

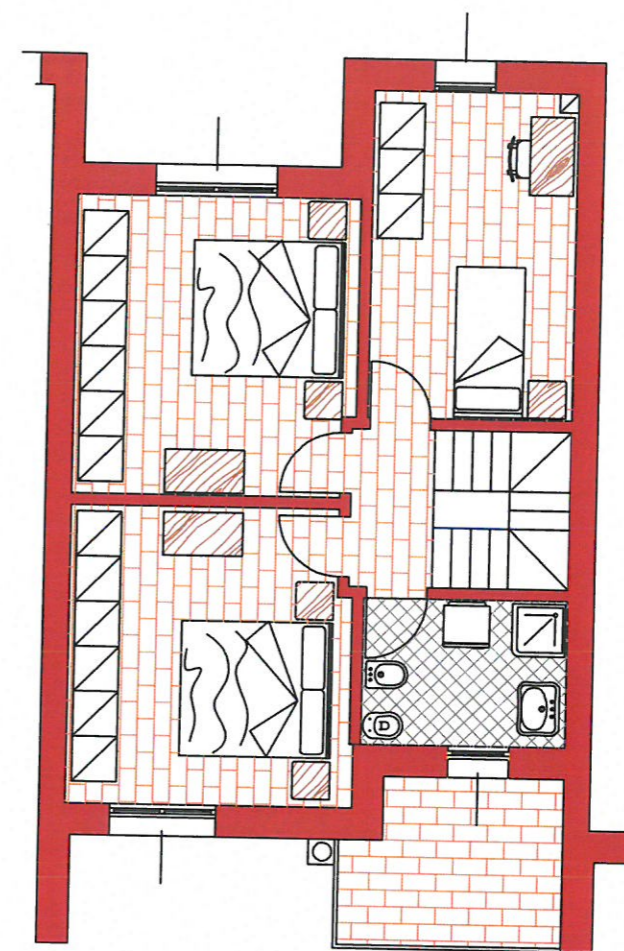
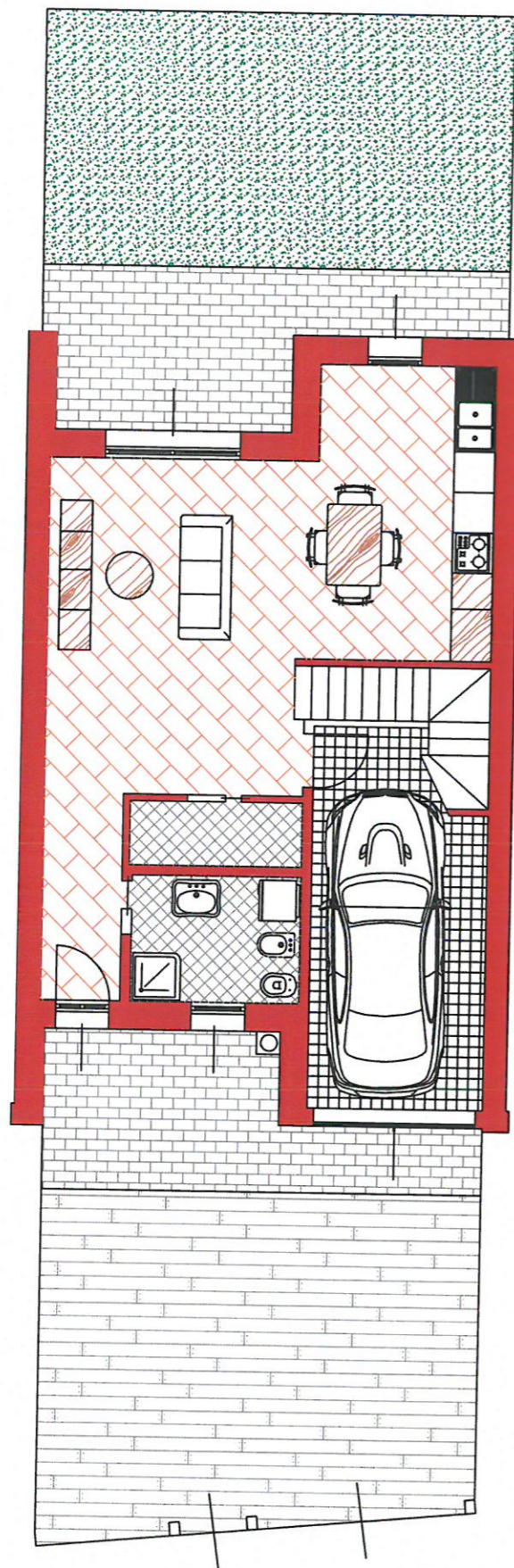
via Victor Hugo

recinzione esistente



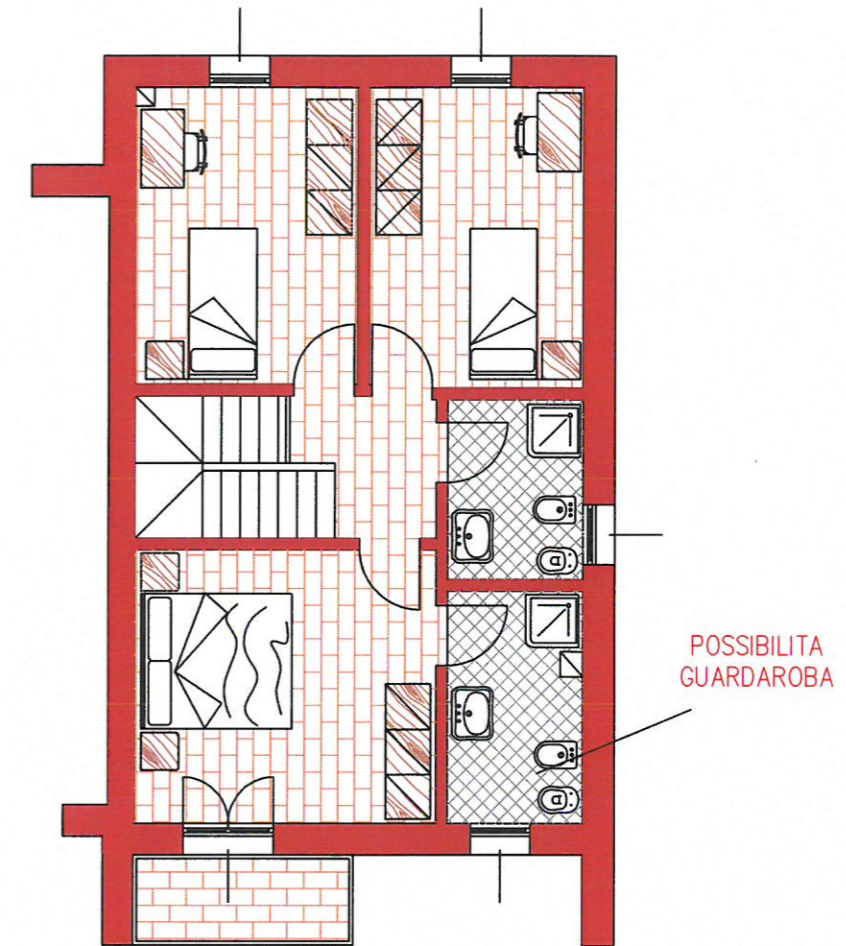
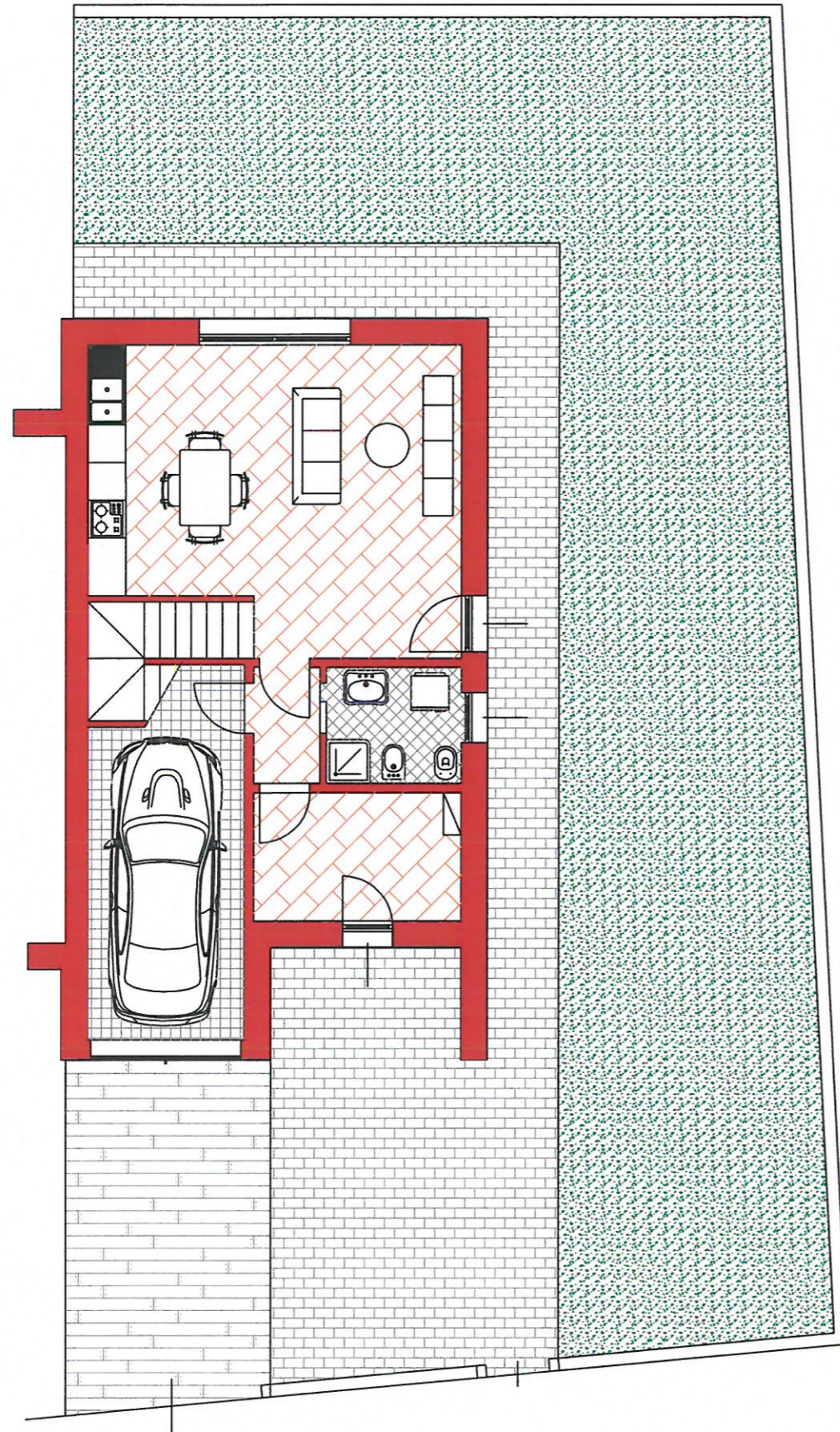
Sup Commerciale:
Piano terra 54.30 mq
Piano Primo 71,81 mq
Autorimessa 17.61 mq
Terrazzo 3.43 mq
Area Cortiliva 116.15 mq

VILLETTA 1



Sup Commerciale:
Piano terra 54.30 mq
Piano Primo 66.71 mq
Autorimessa 16.35 mq
Terrazzo 6.20 mq
Area Cortiliva 82.90 mq

VILLETTA 2



Sup Commerciale:
Piano terra 54.30 mq
Piano Primo 71,81 mq
Autorimessa 17.61 mq
Terrazzo 3.43 mq
Area Cortiliva 178.00 mq

VILLETTA 3